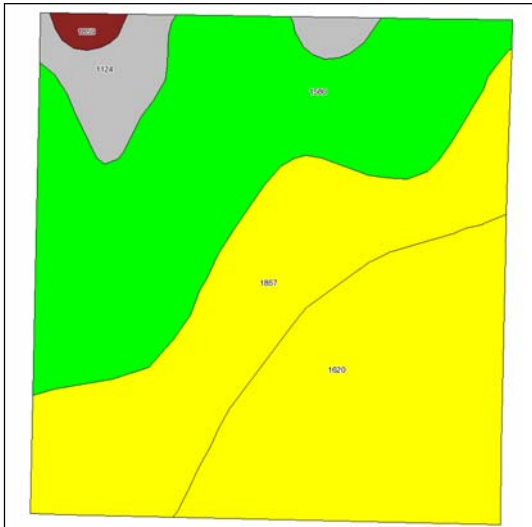


Soils Map



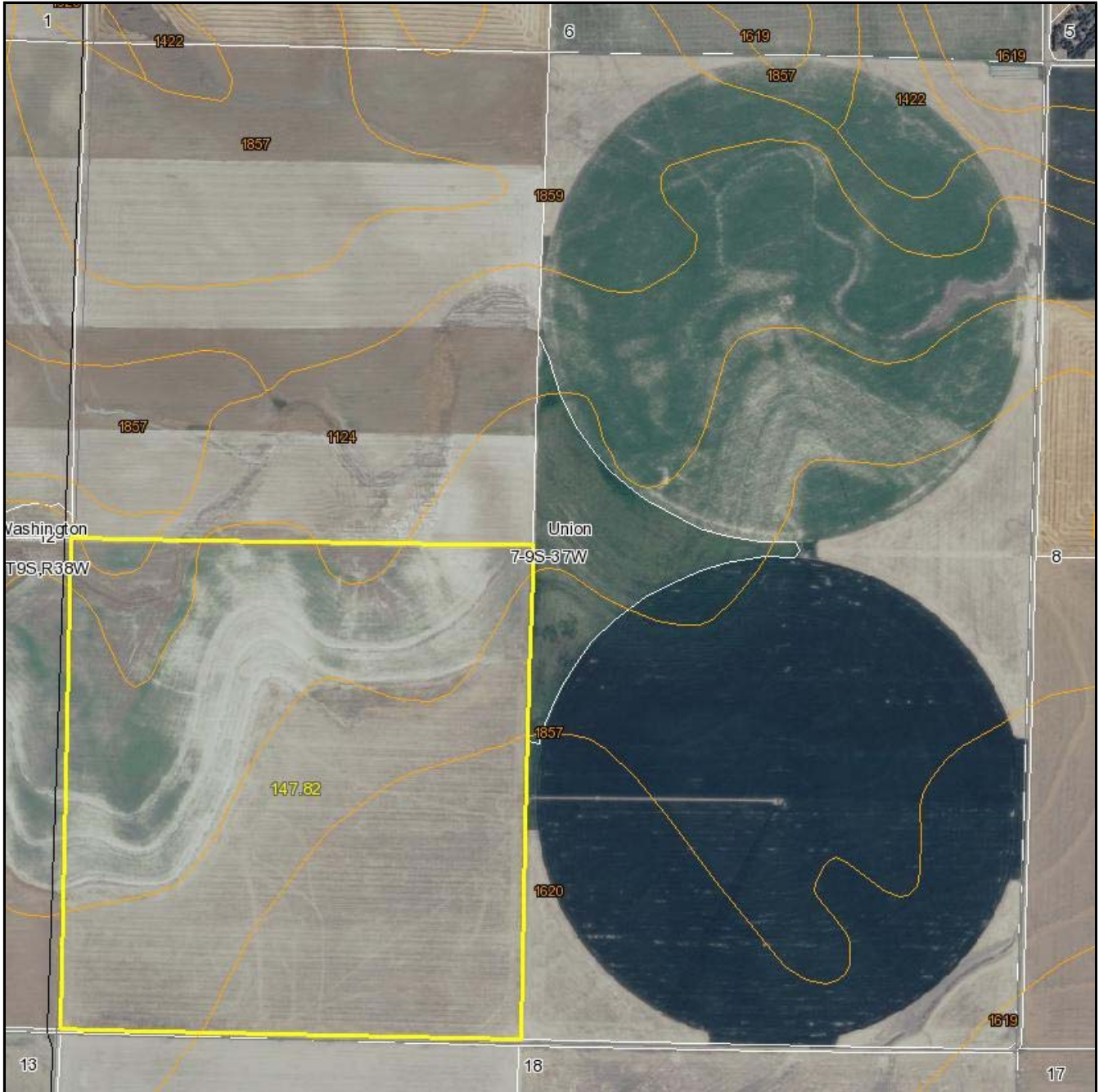
State: **Kansas**
 County: **Sherman**
 Location: **007-009S-037W**
 Township: **Union**
 Acres: **147.8**
 Date: **12/19/2011**



Fsa borders provided by the Farm Service Agency as of May 23, 2008.
 Soils data provided by USDA and NRCS.

Code	Soil Description	Acres	Percent of field	Non-Irr Class Legend	Non-Irr Class	Irr Class	Smooth brome	Alfalfa hay Irrigated	Corn	Corn Irrigated	Sunflowers	Sunflowers Irrigated	Grain sorghum	Grain sorghum Irrigated	Winter wheat	Winter wheat Irrigated	Corn silage Irrigated
1580	Colby silt loam, 5 to 15 percent slopes	55.1	37.3%		Vle										20		
1620	Keith silt loam, 1 to 3 percent slopes	42.8	28.9%		Ile	Ile											
1857	Ulysses silt loam, 1 to 3 percent slopes	39.9	27.0%		Ile	Ile		5	50	160	1350	1800	36	110	35	50	17
1124	Bridgeport silt loam, channeled	8.7	5.9%		Vw		4										
1859	Ulysses silt loam, 3 to 6 percent slopes	1.3	0.9%		Ille	Ille											
Weighted Average							0.2	1.4	13.5	43.2	364.5	486	9.7	29.7	16.9	13.5	4.6

Aerial Map



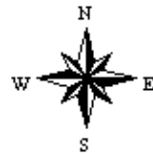
map center: 39° 17' 11.61, 101° 29' 38.03
scale: 10094

Maps provided by:



©AgriData, Inc. 2011
www.AgriDataInc.com

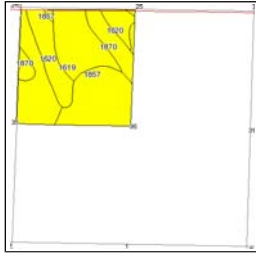
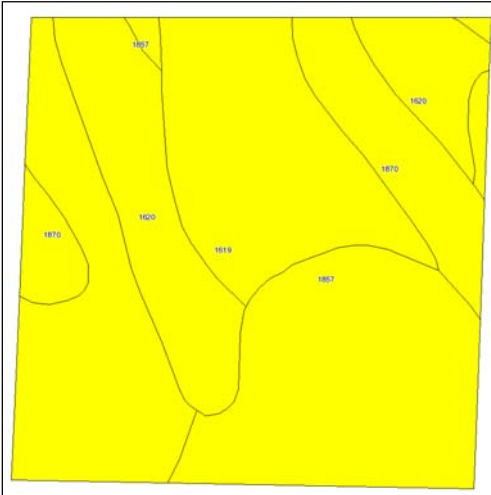
7-9S-37W
Sherman County
Kansas



12/19/2011

Field borders provided by Farm Service Agency as of 5/21/2008. Aerial photography provided by Aerial Photography Field Office.

Soils Map



State: **Kansas**
 County: **Sherman**
 Location: **036-009S-038W**
 Township: **Iowa**
 Acres: **151.6**
 Date: **12/19/2011**



Fsa borders provided by the Farm Service Agency as of May 23, 2008.
 Soils data provided by USDA and NRCS.

Code	Soil Description	Acres	Percent of field	Non-Irr Class Legend	Non-Irr Class	Irr Class	Soybeans Irrigated	Winter wheat	Winter wheat Irrigated	Sunflowers	Sunflowers Irrigated	Alfalfa hay Irrigated	Corn	Corn Irrigated	Grain sorghum	Grain sorghum Irrigated	Corn silage Irrigated	Alfalfa hay
1619	Keith silt loam, 0 to 1 percent slopes	62.2	41.0%		Ilc	I	45	40	70	1700	2150	6	55	175	40	115		2
1857	Ulysses silt loam, 1 to 3 percent slopes	41.6	27.4%		Ile	Ile		35	50	1350	1800	5	50	160	36	110		17
1620	Keith silt loam, 1 to 3 percent slopes	29	19.2%		Ile	Ile												
1870	Ulysses-Keith silt loams, 0 to 1 percent slopes	18.8	12.4%		Ilc	I	42	37	61	1490	1920	6	52	170	38	112		
Weighted Average							23.7	30.6	50	1251.7	1612.8	4.6	42.7	136.7	31	91.2	4.7	0.8

Aerial Map



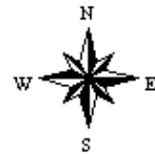
map center: 39° 13' 42.73, 101° 30' 45.14
scale: 10107

Maps provided by:



©AgriData, Inc. 2011
www.AgriDataInc.com

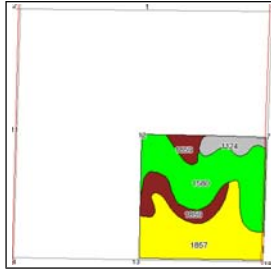
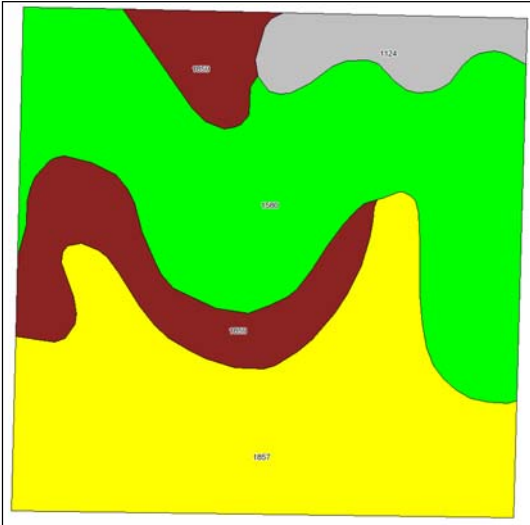
36-9S-38W
Sherman County
Kansas



12/19/2011

Field borders provided by Farm Service Agency as of 5/21/2008. Aerial photography provided by Aerial Photography Field Office.

Soils Map



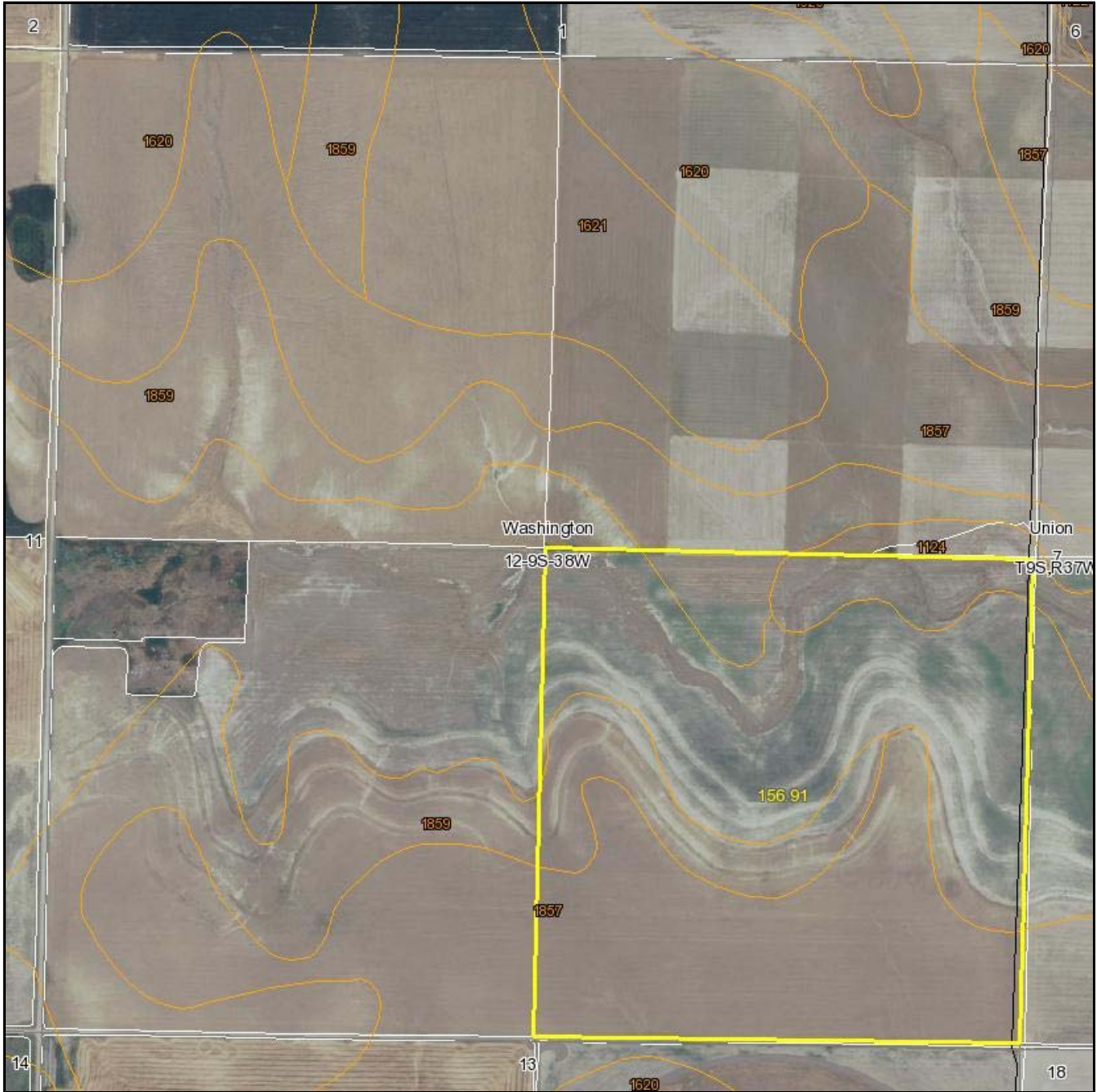
State: **Kansas**
 County: **Sherman**
 Location: **012-009S-038W**
 Township: **Washington**
 Acres: **156.9**
 Date: **12/19/2011**



Fsa borders provided by the Farm Service Agency as of May 23, 2008.
 Soils data provided by USDA and NRCS.

Code	Soil Description	Acres	Percent of field	Non-Irr Class Legend	Non-Irr Class	Irr Class	Smooth bromegrass	Alfalfa hay Irrigated	Corn	Corn Irrigated	Sunflowers	Sunflowers Irrigated	Grain sorghum	Grain sorghum Irrigated	Winter wheat	Winter wheat Irrigated	Corn silage Irrigated
1580	Colby silt loam, 5 to 15 percent slopes	63.3	40.3%		Vle											20	
1857	Ulysses silt loam, 1 to 3 percent slopes	59.4	37.8%		Ile	Ile		5	50	160	1350	1800	36	110	35	50	17
1859	Ulysses silt loam, 3 to 6 percent slopes	24.6	15.7%		IIle	IIle											
1124	Bridgeport silt loam, channeled	9.6	6.1%		Vw		4										
Weighted Average							0.2	1.9	18.9	60.5	510.3	680.4	13.6	41.6	21.3	18.9	6.4

Aerial Map



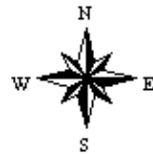
map center: 39° 17' 11.23, 101° 30' 43.68
scale: 10162

Maps provided by:



©AgriData, Inc. 2011
www.AgriDataInc.com

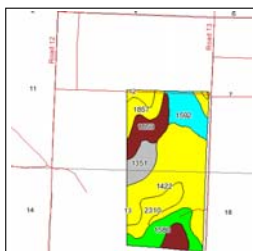
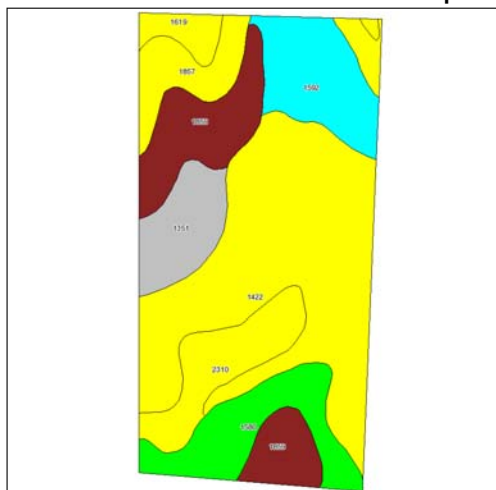
12-9S-38W
Sherman County
Kansas



12/19/2011

Field borders provided by Farm Service Agency as of 5/21/2008. Aerial photography provided by Aerial Photography Field Office.

Soils Map



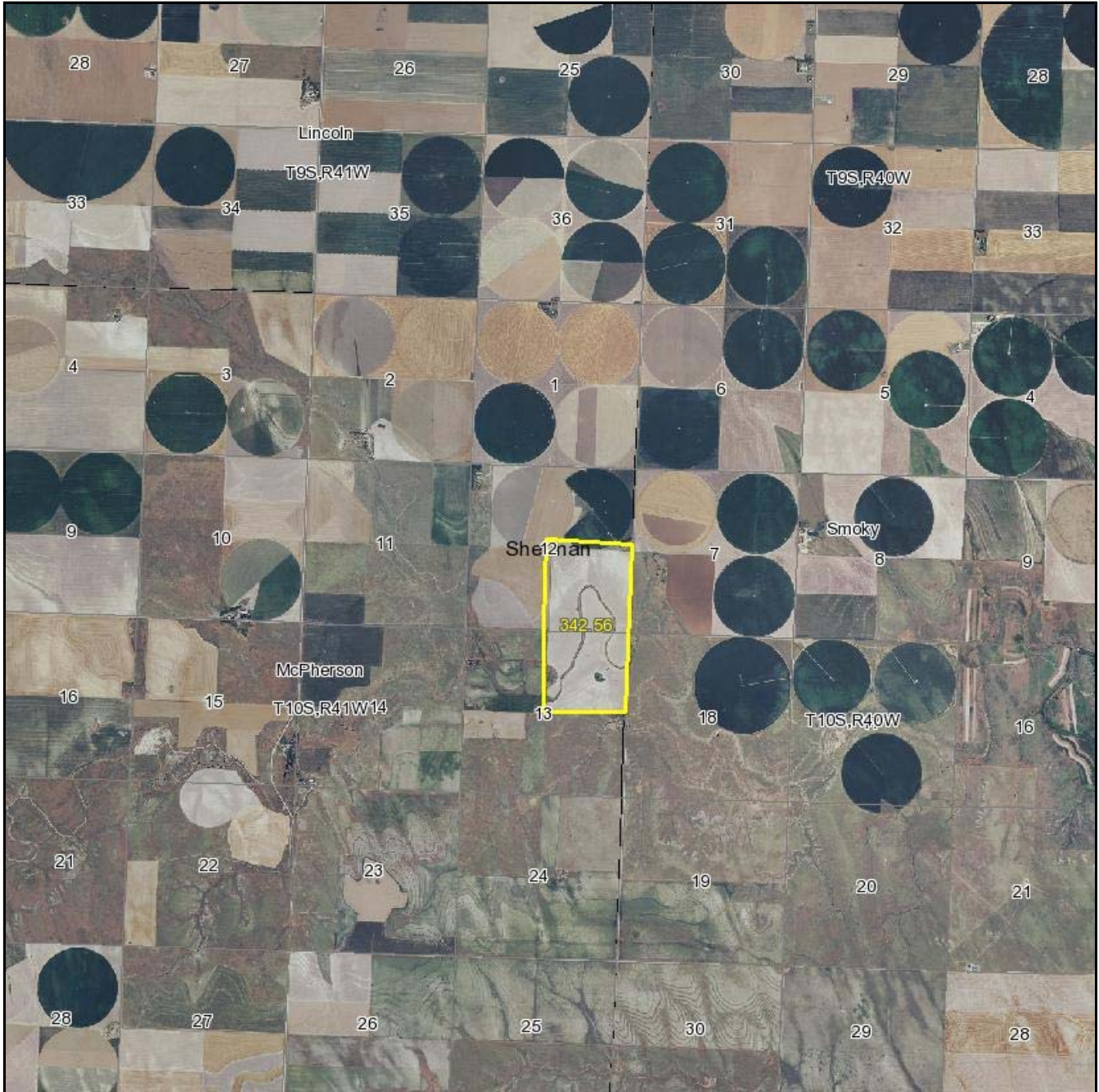
State: **Kansas**
 County: **Sherman**
 Location: **012-010S-041W**
 Township: **McPherson**
 Acres: **326.8**
 Date: **12/19/2011**



Fsa borders provided by the Farm Service Agency as of May 23, 2008.
 Soils data provided by USDA and NRCS.

Code	Soil Description	Acres	Percent of field	Non-Irr Class Legend	Non-Irr Class	Irr Class	Alfalfa hay	Alfalfa hay Irrigated	Winter wheat	Winter wheat Irrigated	Sunflowers	Sunflowers Irrigated	Corn Irrigated	Corn	Grain sorghum	Grain sorghum Irrigated	Soybeans Irrigated	Smoc brom Irrigat
1422	Goshen silt loam, rarely flooded	127.8	39.2%		Ilc	I	2	5	38	60	1700	2100	175	55	40	110	45	
1859	Ulysses silt loam, 3 to 6 percent slopes	44.4	13.6%		Ille	Ille												
1592	Colby-Ulysses complex, 3 to 5 percent slopes, eroded	34.1	10.4%		IVe	Ille		4	21	40	840	1400	104	37	29	90		
1580	Colby silt loam, 5 to 15 percent slopes	34	10.4%		VIe				20									
2310	Bridgeport silt loam, rarely flooded	28.8	8.8%		Ilc	I	3	6	33	55			170		55	115		
1857	Ulysses silt loam, 1 to 3 percent slopes	24.6	7.5%		Ile	Ile		5	35	50	1350	1800	160	50	36	110		
1351	Bridgeport-Arvada complex, rarely flooded	23.9	7.3%		Vc	I	2	6	26	55			130		40	115		
1619	Keith silt loam, 0 to 1 percent slopes	9.2	2.8%		Ilc	I	2	6	40	70	1700	2150	175	55	40	115	45	
Weighted Average							1.2	3.9	27.7	42.2	902.6	1164	120.8	30.7	30.3	82.5	18.9	

Aerial Map



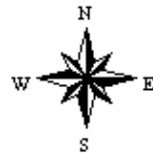
map center: 39° 11' 54.41, 101° 50' 52.25
scale: 60855

Maps provided by:



©AgriData, Inc. 2011
www.AgriDataInc.com

12-10S-41W
Sherman County
Kansas



12/19/2011

Field borders provided by Farm Service Agency as of 5/21/2008. Aerial photography provided by Aerial Photography Field Office.